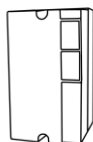


demaroare pentru regim greu / heavy duty starters

Tip	Curent de utilizare	P _{mot} / Motor power AC3/ 380/400Vc.a. (KW)	Contacte auxiliare			Dimens. surub borna Terminal screw size	Sectiune conductor Cu		Greutate	Cod comanda
Type	Operation current I _r (A)		Auxiliary contacts				Cu wire cross section min. max.		Weight (kg)	Order code
			ND	NI	I _{the} (A)					

Tip DRG 10 ÷ 63A, grad de protectie IP44
Type DRG 10 to 63A, safety class IP44


DRG 10A	0,4; 0,55; 0,75; 1; 1,3; 1,8; 2,4; 3,3; 4,5; 6; 8; 10; 11	4	0+2	0+2	6(10)	M 3,5	0,75	1,5	0,9	3240
DRG 25A	16; 20; 25	11	2	2	6	M 5	1,5	4	1,9	3242
DRG 40A	32; 40	18,5	2	2	6	M 5	2,5	10	3,5	3243
DRG 63A	63	30	2	2	6	M 6	6	16	5,5	3244

Date tehnice/ Technical data

-tensiunea nominala de utilizare/ operating rated voltage	V	220; 380; 500
-tensiunea nominala de izolare/ insulating rated voltage	V	600
-frecventa nominala a curentului/ current rated frequency	Hz	50; 60
-frecventa de conectare/ connection frequency	con/h	15
-durata de actionare/ operating time	%	40; 100
-tensiunea de comanda a bobinei/ coil control voltage	V	24; 48; 110; 220/230; 380/400; 500 - 50Hz
-durabilitate mecanica - electrical/ mechanical- electrical endurance	con.	250.000
-tip de executie/ protective tratment		normal, T III, naval/ normal, T III, marine
-domeniu de reglaj releu/ relay setting range		(0,67...1) x I _r
-standarde si norme/ standards and norms		SREN 60947-1; SR-EN 60947-4; VDE 0660; ST 26/2004

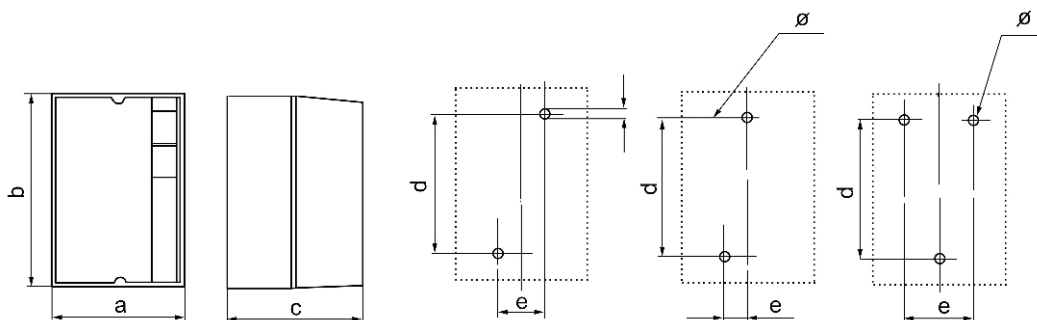
Echipare la livrare/ Delivery outfit

Cod produs Product code	Cutie si capac din mase plastice termorigide Thermosetting plastic box and lid	Cutie si capac din tabla vopsita Painted sheet box and lid	Contacteur pentru regim AC3 AC3 rated contactor	Releu TSA pentru protectie la suprasarcina TSA relay for overload protection	Butoane de actionare Operating buttons
3240	●	-	●	●	●
3242	●	-	●	●	●
3243	●	-	●	●	●
3244	●	-	●	●	●

demaroare pentru regim greu / heavy duty starters

Dimensiuni gabarit/ Overall dimensions

DRG 10A cod/ code 3240
 DRG 25A cod/ code 3242
 DRG 40A cod/ code 3243
 DRG 63A cod/ code 3244



Tip/ Type

Cod/ Code

a

b

c

d

e

Ø

DRG 10A

3240

81

143

(*92)111

110

26

2X5,5

DRG 25A

3242

137

200

141

164

20

2X5,5

DRG 40A

3243

169

253

194

206

130

3X5,5

DRG 63A

3244

210

320

200

268

156

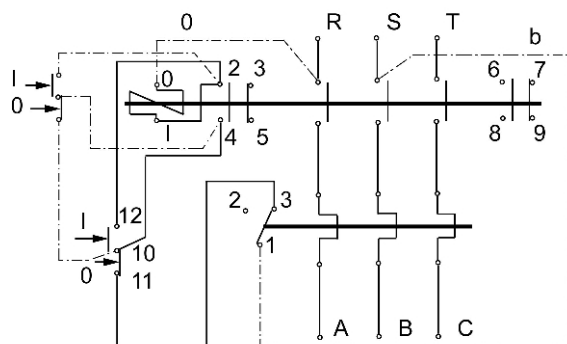
3X5,5

*pentru DRG 10A fara contacte auxiliare/ for DRG 10A without auxiliary contacts

DRG

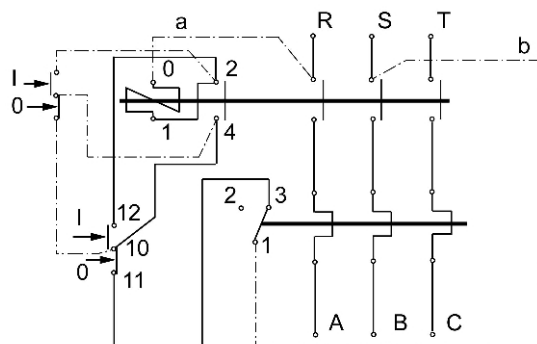
Scheme electrice/ Schemes

cod/ code 3240...3244



cu contacte auxiliare/ with auxiliary contacts

cod/ code 3240



fara contacte auxiliare/ wo. auxiliary contacts

Pentru comanda de pe aparat se realizeaza montajul figurat cu o linie continua. Pentru comanda de la distanta se va realiza montajul figurat cu linie intrerupta, eliminandu-se legaturile 2-12; 4-10. Conexiunile marcate cu literele "a" si "b" se executa numai cand tensiunea intre faze este aceeaasi cu tensiunea de comanda a bobinei, in caz contrar acestea se desfac de la bornele R,S si se racordeaza la tensiunea de comanda./ For the order on the apparatus, the circuit in solid line. For remote control the circuit in dotted line removing the connections 2-12; 4-10. The connections marked "a" and "b" is performed only when the voltage between phases is the same as coil control voltage, otherwise these will be removed from R; S terminals and connected to the control voltage.

Date pentru comanda DRG / Data for ordering DRG:

- denumire aparat/ apparatus name;
- cod/ code;
- curent de utilizare (I_r)/ operating current;
- tensiunea de comanda a bobinei (U_{bob})/ coil voltage;
- frecventa/ frequency;
- cu sau fara contacte auxiliare (pentru DRG 10A)/ with or without auxiliary contacts (for DRG 10A)
- executie climatica/ climatic execution